

**TACTILE** is a leading global manufacturer of stone-coated roofing tile manufacturers.

Using state-of-the-art Korean technology, coupled with high specification Italian raw materials, **TACTILE** aims to deliver world class roofing solutions to all its valued clients.

We are confident that our product is an optimal blend of comfort, safety and quality. With this in mind, we put together the finest designs, with new technologies and years of research & development.

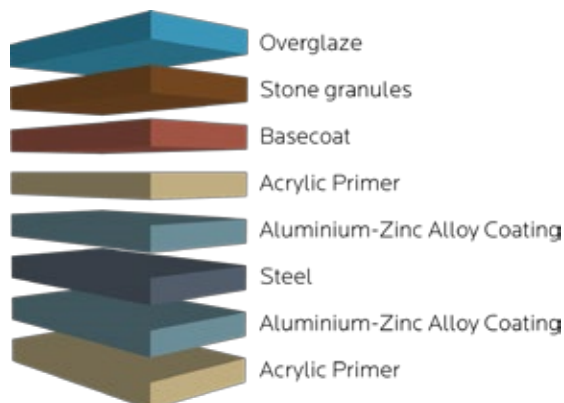
**TACTILE** redefines roofing solutions.

## PRODUCTS

**TACTILE** uses high quality steel coated with Aluminium and Zinc.

The stone granules used, are fine Italian basalt chips.

The top quality raw materials are put together using advanced Korean technology to produce the **TACTILE** products.



## PROFILES

**TACTILE** roofing is available in four different profiles across a range of 18 different colours.

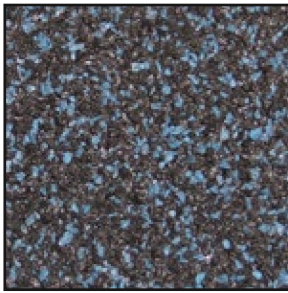
Below are the details of the five different profiles - Classic, Shake, Shingle, Edge and Roman:

<b>CLASSIC</b>		Panel Size	420 mm x 1,340 mm
		Installed Exposure	370 mm x 1,265 mm
		Panels per m <sup>2</sup>	2.13/m <sup>2</sup>
		Installed Weight	5.96 kg/m <sup>2</sup>
<b>SHAKE</b>		Panel Size	410 mm x 1,375 mm
		Installed Exposure	370 mm x 1,335 mm
		Panels per m <sup>2</sup>	2.02/m <sup>2</sup>
		Installed Weight	5.65 kg/m <sup>2</sup>
<b>SHINGLE</b>		Panel Size	415 mm x 1,350 mm
		Installed Exposure	370 mm x 1,325 mm
		Panels per m <sup>2</sup>	2.04/m <sup>2</sup>
		Installed Weight	5.71 kg/m <sup>2</sup>
<b>EDGE</b>		Panel Size	420 mm x 1,340 mm
		Installed Exposure	370 mm x 1,265 mm
		Panels per m <sup>2</sup>	2.13/m <sup>2</sup>
		Installed Weight	5.96 kg/m <sup>2</sup>
<b>ROMAN</b>		Panel Size	425 mm x 1,322 mm
		Installed Exposure	370 mm x 1,253 mm
		Panels per m <sup>2</sup>	2.1/m <sup>2</sup>
		Installed Weight	5.96 kg/m <sup>2</sup>

# COLOURS

TACTILE has an assortment of attractive colour mixes of stone chips for its roofing products, available for all five profile forms.

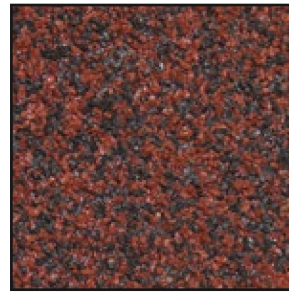
\*please note that the actual colour may vary slightly from print



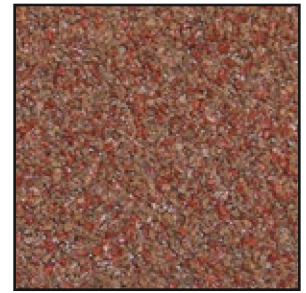
AZURE



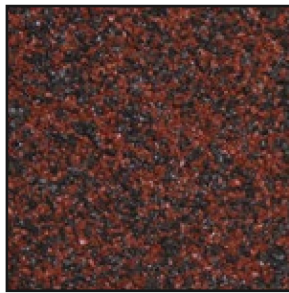
CASTANO



TERRACOTTA



RUSTIQUE



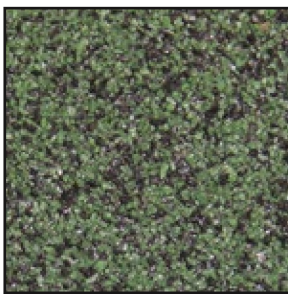
RUBI



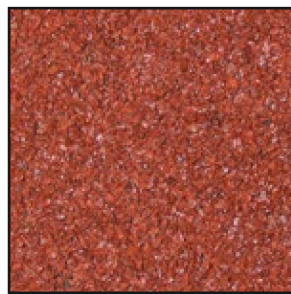
NOUGAT



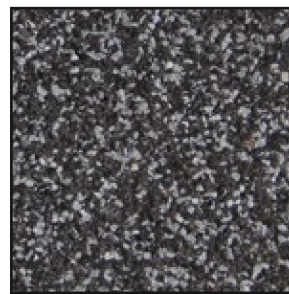
CAFE



VERDE



ROSSO



GRIS



MORENO



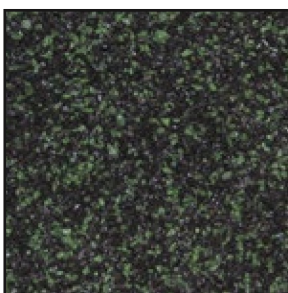
ESPRESSO



SLATE



PEPPER



FORESTA



MARRON



GRAFITO



SAND